



The Garden Club of Virginia exists to celebrate the beauty of the land, to conserve the gifts of nature and to challenge future generations to build on this heritage.

GARDEN CLUB
OF VIRGINIA

Albemarle Garden Club-1913 • The Garden Club of Alexandria-1925 • The Ashland Garden Club-1922 • The Augusta Garden Club-1919 • The Blue Ridge Garden Club-1925
The Boxwood Garden Club-1937 • The Brunswick Garden Club-1924 • The Charlottesville Garden Club-1949 • Chatham Garden Club-1921 • The Garden Club of Danville-1918
Dolley Madison Garden Club-1919 • The Garden Club of the Eastern Shore-1939
The Elizabeth River Garden Club-1927 • The Garden Club of Fairfax-1926 • Fauquier and Loudoun Garden Club-1915 • The Franklin Garden Club-1945 • Gabriella Garden Club-1933
The Garden Study Club-1946 • The Garden Club of Gloucester-1928 • The Hampton Roads Garden Club-1932 • Harborfront Garden Club-1953 • Hillside Garden Club-1935
The Hunting Creek Garden Club-1942 • The Huntington Garden Club-1935
The James River Garden Club-1915 • Leesburg Garden Club-1915 • The Little Garden Club of Winchester-1934 • The Lynchburg Garden Club-1922 • The Martinsville Garden Club-1923 • The Garden Club of the Middle Peninsula-1994 • The Mill Mountain Garden Club-1927 • The Nansemond River Garden Club-1928 • The Garden Club of Norfolk-1915 • The Garden Club of the Northern Neck-1966 • The Petersburg Garden Club-1925 • The Princess Anne Garden Club-1932 • The Rappahannock Valley Garden Club-1924 • Rivanna Garden Club-1922 • Roanoke Valley Garden Club-1925
The Spotswood Garden Club-1924 • Three Chopt Garden Club-1939 • The Tuckahoe Garden Club of Westhampton-1928 • The Virginia Beach Garden Club-1937
The Garden Club of Warren County-1929 • Warrenton Garden Club-1911
The Williamsburg Garden Club-1929 • Winchester-Clarke Garden Club-1924

12 East Franklin Street
Richmond, VA 23219
www.gcvirginia.org

Year in Review 2015-2016



Since 1920 the Garden Club of Virginia has been dedicated to the enhancement of the commonwealth through environmental conservation, horticultural education and historic landscape restoration.

We accomplish this work, in part, by operating the largest and oldest statewide house and garden tour in the nation, Historic Garden Week.

Thirty-three hundred members from 47 garden clubs across the state work to make our gifts to Virginia communities possible.

Celebrating and preserving the natural beauty of our commonwealth are at the heart of all we do.



Dear Members and Friends,

I salute those who have worked hard to achieve successful events for the Garden Club of Virginia over the past year. We have had a very successful Historic Garden Week, dedicated restoration projects at the Historic Henry County Courthouse and Monticello, hosted three beautiful flower shows along with educational programs for Conservation and Horticulture and are beginning a new partnership with Virginia State Parks.

The Centennial is drawing closer and as 2020 illuminates our history, we remain current and dynamic moving into the future.

Our new president, Nina Mustard, has led the development of a Strategic Plan that will put GCV on the road to our next century; celebrating all that is successful and keeping the Club relevant and poised for advancement. Our founders were cutting-edge risk takers who advocated for a more beautiful Virginia, and we continue in that vein.



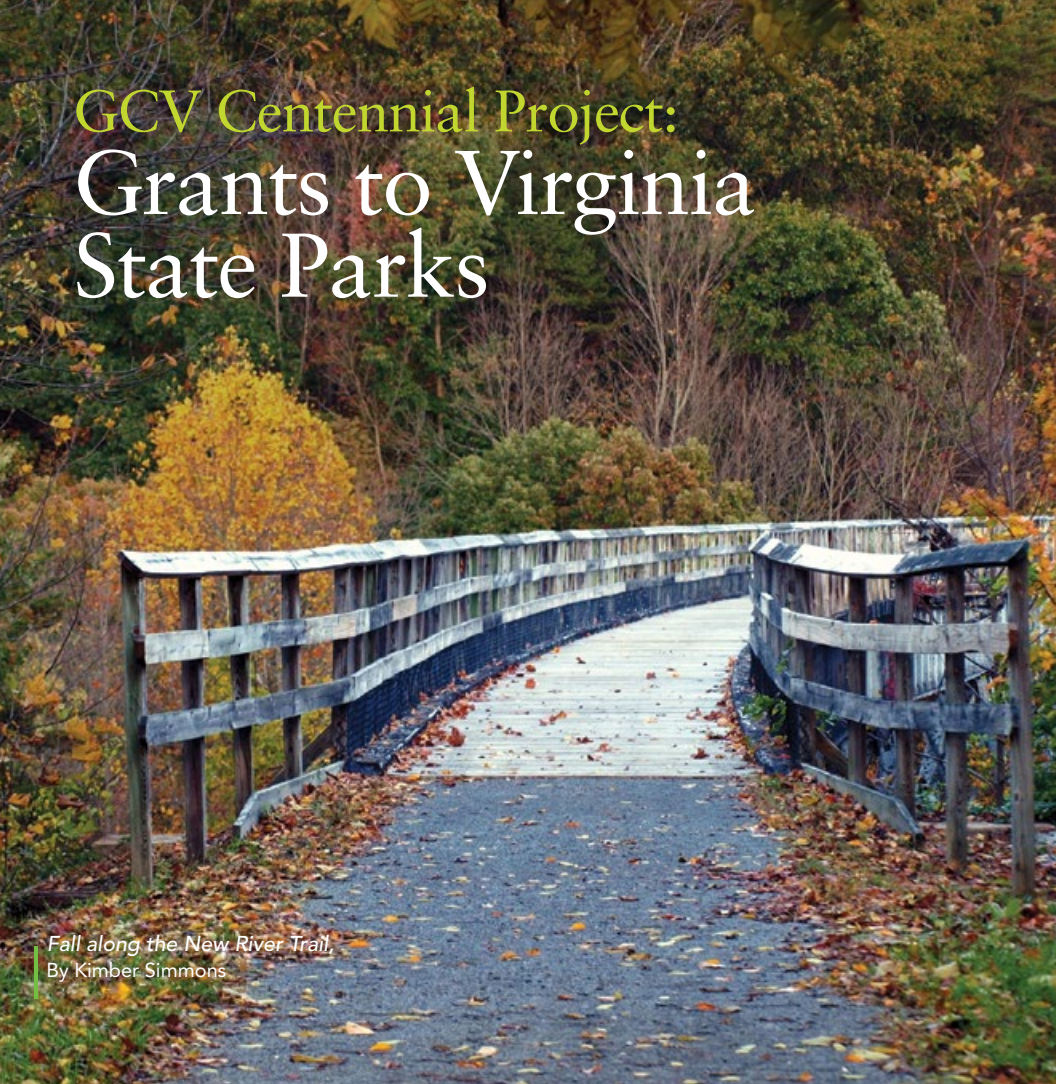
Remarkable blooms are attractive but a true gardener knows that garden design, soil preparation and well-thought out hardscapes are essential to making a horticultural display a true garden. Not all the work for the Club is apparent on the surface. Inside this Year in Review 2015-16, take note of the successful undertakings of the Garden Club of Virginia. GCV members and staff at the Kent-Valentine House, our Richmond headquarters, combine to put legs on our mission, "celebrate the beauty of the land, conserve the gifts of nature and challenge future generations to build on this heritage."

I remain grateful to all who contribute to our success.

Jeanette R. Cadwallender

Jeanette Rowe Cadwallender
President 2014-2016

GCV Centennial Project: Grants to Virginia State Parks



Fall along the New River Trail.
By Kimber Simmons

Virginia State Parks preserve and interpret Virginia's natural and cultural resources. Given the threat of development, important native species are protected in parks. Animals find habitat. Historical interpretations teach us about our past, and the parks provide outdoor recreation for everyone. By adopting Virginia State Parks as our Centennial Project, GCV is recognizing our history and working to support the future of these vital resources.

In 1929, the same year Historic Garden Week in Virginia was launched, GCV advocated for the establishment of state and national parks in the commonwealth. In the past year, garden clubs have hiked, picnicked and even held club meetings in nearby parks.

As our Centennial project, the Virginia State Parks Grants are funded by Historic Garden Week proceeds. A garden club, or a Virginia State Park itself, may apply for these grants. Applications can be found at gcvirginia.org. Our gifts will help parks in many ways: improvements to trails, playgrounds, exhibits and gardens. The possibilities are endless.



Executive Director

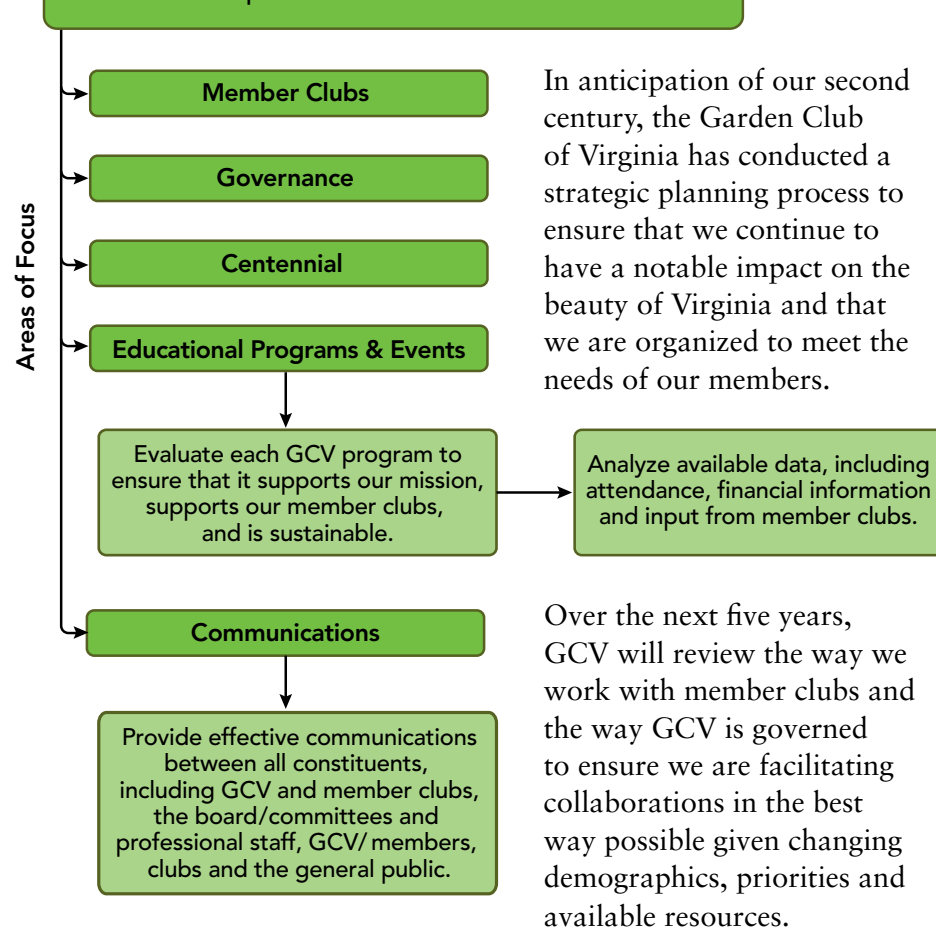
Another great year of flowers, workshops, garden tours, interesting programs, important advocacy, restorations and friendship for GCV members! As you look through this Year in Review, I hope you feel proud of your organization and all that it offers its members. I am continually amazed by how much is accomplished by our garden clubs that directly benefits individuals, communities and Virginia.



The photos of happy faces at events and programs represent the many opportunities to get together for learning and fun. I hope you are saying, "I was there! I am so glad that I went and I loved being there!" If not, I encourage you to attend as many programs as you can this coming year. Take a friend, go with your club and enjoy all that this extraordinary organization has to offer.

Lynn McCashin
Executive Director

Strategic Plan Strategy: to work in partnership with member clubs to strengthen the impact of statewide efforts and to provide resources for member clubs.



Treasurer's Report



The Garden Club of Virginia operates on a fiscal year that began July 1, 2015, and ended on June 30, 2016. Our operating income for the year exceeded the budget by 11% while expenses came in 18% below budget. The budget for the 2016-2017 fiscal year was presented by the Treasurer to the Board of Directors for a vote of approval and then to the membership at the 2016 GCV Annual Meeting in May.

The revenue from Historic Garden Week is one of the largest sources of income each year for GCV. The related expenses are taken from this income, and the remaining funds are used to support our restoration projects around the commonwealth. In addition, GCV will be celebrating our centennial in 2020 and we have allocated \$100,000 a year over the next five years from Historic Garden Week proceeds to make grants to Virginia State Parks on projects that fall within our mission and the state parks' mission: conservation, beautification, horticulture, preservation and education.

2% Sponsorships \$33,000

5% Other \$75,066

9% Dues \$129,320

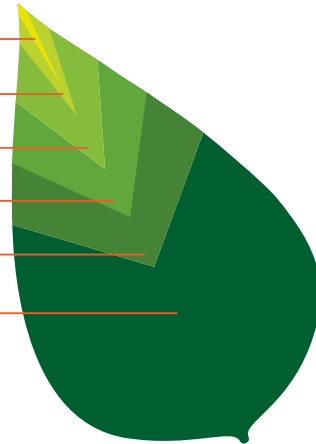
9% Investments \$142,023

11% Donations \$162,870

64% Historic Garden Week \$966,909

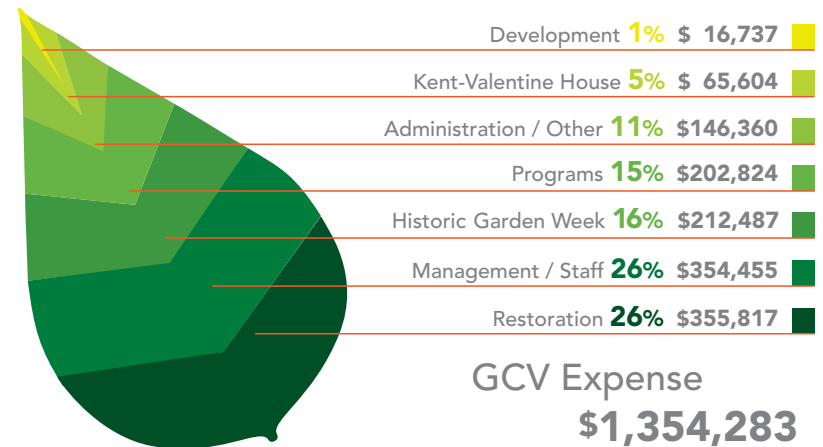
GCV Income

\$1,509,187



The other primary sources of funding are membership dues, the annual fund, sponsorships and donations. Any shortfalls are funded by a draw of up to 5% from our endowment fund.

Expenses for GCV include maintaining our headquarters, management/staff salaries, insurance, funding of our restoration and centennial projects, development expenses and the cost of our yearly audit. To communicate with our membership, we maintain our websites and publish the *Journal* quarterly. Our budget includes contributions to member clubs toward our annual fall and spring meetings and three yearly flower shows. We budget to break even on our events: schools, forums and workshops.



Our assets of approximately \$8 million include the Kent-Valentine House property, our cash accounts and investment portfolio. At the end of June 2016, the GCV investment portfolio was valued at more than \$5.9 million, which is approximately 7% of GCV's total assets. Our financial records are audited annually, and we receive a clean opinion. As a 501(c)(3) organization, our Federal Form 990 is filed each year and is available for public review.

The Garden Club of Virginia is in a strong financial position for members to continue the work of our mission throughout the Commonwealth of Virginia.

Respectfully submitted,

Betsy Worthington, *Treasurer*

Garden Club of Virginia Public Events



October 5-6, 2016

**78th Annual
GCV Rose Show,
Hampton**

*Hosted by
The Hampton Roads
Garden Club*

November 3, 2016

**Conservation Forum
"Green Energy -
Exploring Wind & Solar"
Charlottesville**

April 5-6, 2017

**83rd GCV
Daffodil Show,
Hampton**

*Hosted by
The Huntington
Garden Club*

April 22-29, 2017

**Historic Garden
Week in Virginia**

June 22, 2017

**75th Annual
GCV Lily Show,
Tappahannock**

*Hosted by
The Garden Club of
the Middle Peninsula*

For more information on these events, please visit gcvirginia.org.

Garden Club of Virginia Awards

Massie Medal for Distinguished Achievement



GCV President Jeanette Cadwallender with Massie Medal recipient Bebe Luck (Ashland) and her daughters, Georgia, Anne and Lin.

The 2016 Massie Medal Award for Distinguished Achievement was presented to Bebe Luck, a member of the Ashland Garden Club. Bebe is known for her exceptional dedication, energy and commitment in many leadership positions. Her friends in member clubs said it best, “We had the privilege to work with Bebe. While her work is quiet and behind the scene, she sets a standard of excellence and graciousness that is the essence of GCV.”



Common Wealth Award Winners: Rachel Watson (President, Charlottesville) and Phyllis Ripper (President, Rivanna)

Common Wealth Award

The Common Wealth Award was established in May 1979 to provide annual grants to the community projects of the Garden Club of Virginia’s member clubs. The 2015 award was given to two clubs: the Charlottesville and Rivanna Garden Clubs, who are joining forces to create a beautiful garden at the Blue Ridge Juvenile Detention in Albemarle County.

Charlottesville and Rivanna Garden Clubs will also assist with the project’s design and management, including enlarging the existing garden and filling it with organically grown heirloom vegetables, fruit trees, berries, native trees and shrubs.

deLacy Gray Memorial Medal for Conservation

The Garden Club of Danville’s Hollis Scott Stauber received the 2016 deLacy Gray Award for Conservation. As a conservation leader, Hollis helped develop the Danville recycling project and created a brochure detailing ecofriendly insecticides and cleaning products. She chaired her club’s Conservation Forum on the Health of the Dan River and the GCV Conservation Workshop “Conservation in Virginia: What is Working?”



Hollis Scott Stauber (Danville) deLacy Gray Memorial Medal for Conservation recipient and GCV President Jeanette Cadwallender.

Elizabeth Cabell Dugdale Award

For meritorious achievement in conservation, this award was presented jointly to Virginia Military Institute and Washington & Lee University. These distinguished institutions have demonstrated a commitment to conservation and ecology by creating outstanding programs on their campuses. VMI maintains the Chessie Nature Trail, a seven-mile, rail-to-trail project along the Maury River. W&L installed solar panels on the law school and parking garage and designed programs to involve students in a Campus Garden, a composting program and recycling initiatives.



At the Dugdale Award announcement: Chris Wise, Kimberly Hodge Cowgill, W&L; GCV President Jeanette Cadwallender; GCV Awards Committee Chairman Katherine Knopf (Roanoke Valley); Larry Camper, JB Harris, Lt. Col. Richard Fletcher, VMI; GCV Conservation and Beautification Committee Chairman Tuckie Westfall (Alexandria); Col. Jay Williams, VMI. Photo by Catharine Gillingham Burns.

Conservation

Relevant issues of importance to the preservation, protection and beauty of Virginia's environment are the focus of the Conservation and Beautification Committee. In 2016, GCV took a position to oppose offshore oil and gas drilling in the Atlantic Ocean and to continue vigilance over the proposed James River power line crossing. Members' voices are heard in local communities, and by the state and federal government as a well-informed voice for the environment



The 57th Conservation Forum, "Film Festival on the Fourth," was held at the Academy of Fine Arts, Warehouse Theatre in Lynchburg, Va. The

film "Rappahannock: The Story of a Historic and Beautiful River and its People" was featured along with a collection of short films on conservation issues with an emphasis on water, plastics pollution and pesticides. The films inspired letters of appreciation from students in attendance.



Above: GCV President Jeanette Cadwallender, Piedmont Environmental Council President Chris Miller, Conservation and Beautification Committee Chairman Tuckie Westfall (Alexandria)



Left: Conservation Forum Co-Chairmen, Zan Thomas (Dolley Madison) and Sarah Hellewell (Hillside)

Legislative Day

Legislative Day, held in conjunction with the Virginia Conservation Network, included meetings with legislators as well as an issues review session conducted online. The 2016 GCV Legislative issues reflected our continued vigilance regarding the ban on uranium mining, support for state park funding, clean water and air, advocacy of a plan for recurrent flooding adaptation, and the preservation of the viewshed of the lower James River.

Conservation and Environmental Studies Fellowship



Paul Lacy, Zan Thomas (Dolley Madison), GCV President Nina Mustard (Williamsburg) and GCV Conservation and Beautification Committee Chairman Wendy Vaughn (Princess Anne)

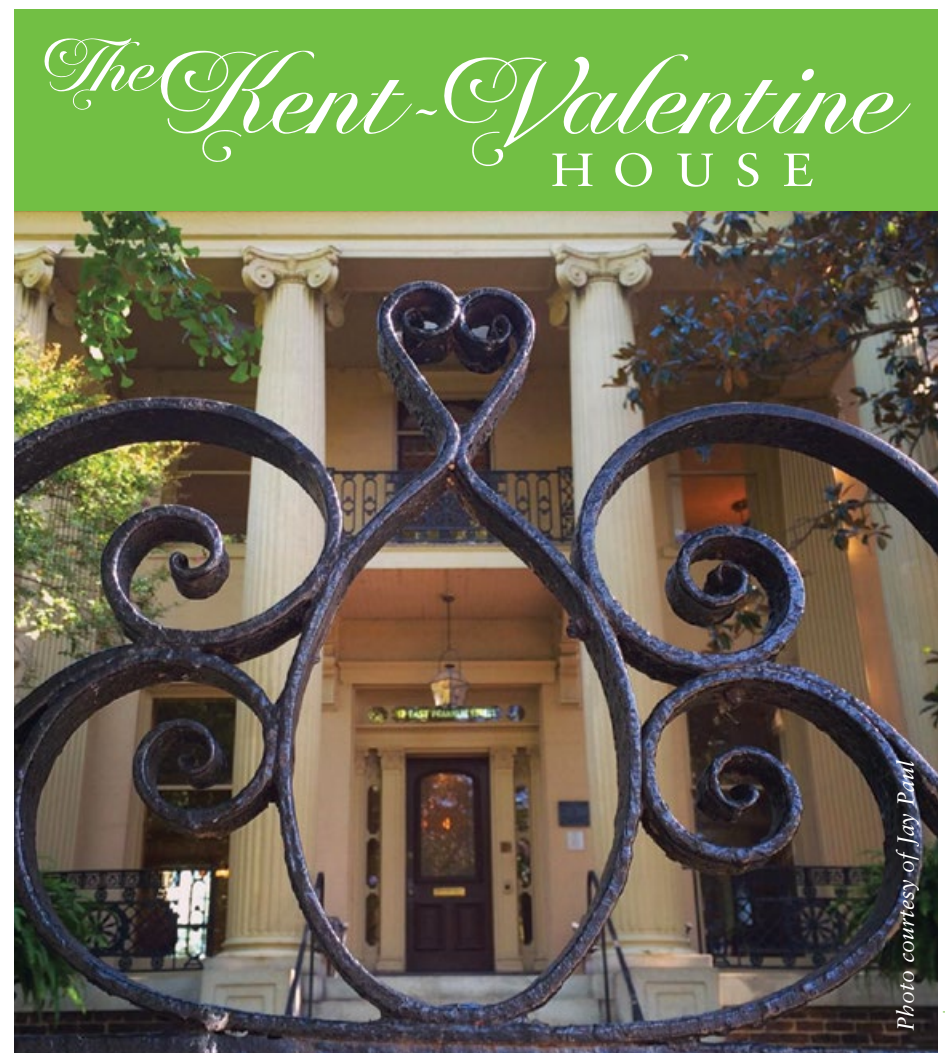
This is the second year for the Conservation and Environmental Studies Fellowship, begun in 2015. It supports research of flora, fauna or cultural practices that directly impact the Commonwealth of Virginia. The one-year Fellowship provides an annual grant of \$4,000 for study and research at an accredited university in Virginia for an undergraduate or graduate student.

At the Board of Governors meeting in Martinsville, our first fellow, Nikki Andressen, presented her work on the habitat essential to the native pitcher plant, *sarracenia flava*.

Paul M. Lacy, a graduate student in Integrated Science and Technology at James Madison University, has been chosen as our 2016 Conservation Fellow. His research project is titled "Native and Invasive Aquatic Plant Species in Virginia Trout Water." We look forward to seeing the results of this research.

Conservation Educator Award

Adopted in 2016, the Conservation Educator Award will recognize individuals or organizations whose work in an educational environment supports the mission of the Garden Club of Virginia and its conservation ideals. This recognition award will be given to an individual or organization who creates a learning environment that benefits the community. The learning environment may extend beyond a traditional "school" environment, and recipients may be educators, scout leaders, 4-H leaders, master gardeners, or environmentally focused organizations. The first recipient will be announced at the GCV Conservation Forum in November 2016.



GCV's Historic Headquarters

Since 1972, the Kent-Valentine House has served as headquarters and home to the Garden Club of Virginia. Located in the Monroe Ward District in downtown Richmond, this antebellum gem is one of its kind in the area. The Kent-Valentine House is a Virginia Historic Landmark listed on the National Register of Historic Places. It is one of the area's first adaptive-use restoration projects and inspired renewal in the neighborhood. GCV is just the fourth owner of the house which is 171 years old. Kent-Valentine House is available for club meetings and luncheons.

Restoration

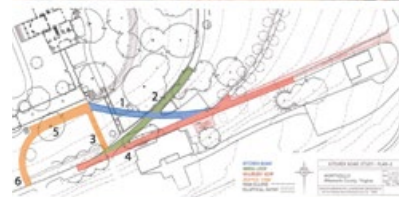
An abiding appreciation for the past, present and future of Virginia's historic spaces inspires the Garden Club of Virginia to create appropriate settings for many of the state's notable landmarks. Since 1929, the proceeds of Historic Garden Week have funded the restoration of more than 100 gardens at almost 50 individual properties within the commonwealth.



Historic Henry County Courthouse, Martinsville



Working with the City of Martinsville, and with the support of the Harvest Foundation, the Garden Club of Virginia renovated the square surrounding the Historic Henry County Courthouse. With the presentation of the completed project to the City of Martinsville in October, GCV advanced the revitalization of the downtown area by providing a central, tree-lined plaza which preserves the essential character of the Courthouse grounds and offers a welcome gathering place for the residents of Martinsville.



Kitchen Road, Monticello, Charlottesville

In 1938, the Garden Club of Virginia restored the West Lawn flower gardens at Monticello in accordance with details found in Mr. Jefferson's sketches and notes. Seventy-eight years later, the Garden Club completed another piece of restoration work at Monticello. The Kitchen Road is an essential lane in the intricate pathway system designed by our third president. In order to transform the mountaintop

landscape back into one familiar to Mr. Jefferson, every step in this process has been taken with painstaking deliberation supported by scholarly research, design ingenuity and meticulous workmanship.

Poe Museum, Richmond

The Enchanted Garden at the Poe Museum, in downtown Richmond, was planted in 1929. The current design, by William D. Rieley, landscape architect for the Garden Club of Virginia, features plants mentioned in, or evocative of, the writings of Edgar Allan Poe.



Landscape Architecture Research Fellowships

Proceeds from Historic Garden Week have enabled GCV to establish research fellowships for graduate level landscape architecture students. The William D. Rieley Fellowship documents historic gardens that are not privately held. The Rudy J. Favretti Fellowship documents privately owned historic properties.



The 2015 Rudy J. Favretti Fellowship was awarded to Wenling Li, who earned her Master of Landscape Architecture Program from Harvard University. Her subject of research was Berkeley Plantation in Charles City County.



Westover Plantation, also in Charles City County, was the research subject of the 2015 William D. Rieley Fellow, Amanda Goodman. Amanda is completing her Master of Landscape Architecture degree at the University of Virginia.

The results of the work of the GCV Research Fellows are available online at www.gcvfellowship.org, including published reports and site plans. Historic Research Fellowships will be awarded again in the spring of 2017.

Garden Club of Virginia Restoration Projects

- | | | |
|---|---|---|
| Adam Thoroughgood House,
<i>Virginia Beach*</i> | Historic Portsmouth Courthouse,
<i>Portsmouth</i> | Oatlands,
<i>Leesburg</i> |
| Bacon's Castle,
<i>Surry</i> | Historic Smithfield,
<i>Blacksburg*</i> | Poe Museum,
<i>Richmond</i> |
| Belle Grove,
<i>Middletown</i> | Historic St. Luke's Church,
<i>Smithfield*</i> | Point of Honor,
<i>Lynchburg</i> |
| Belmont,
<i>Fredericksburg</i> | Hollins University,
<i>Roanoke</i> | Poplar Forest,
<i>Lynchburg</i> |
| Bruton Parish Church,
<i>Williamsburg</i> | John Handley High School,
<i>Winchester</i> | Prestwold Plantation,
<i>Clarksville*</i> |
| Burwell-Morgan Mill,
<i>Millwood</i> | Kenmore,
<i>Fredericksburg</i> | Scotchtown,
<i>Beaverdam*</i> |
| Centre Hill Mansion,
<i>Petersburg</i> | Kent-Valentine House,
<i>Richmond</i> | Smith's Fort Plantation,
<i>Surry</i> |
| Christ Church-Lancaster,
<i>Irvington</i> | Ker Place,
<i>Onancock</i> | St. John's Mews,
<i>Richmond</i> |
| Danville Museum of Fine Arts and History,
<i>Danville</i> | Lee Hall,
<i>Newport News</i> | State Arboretum of Virginia,
<i>Blandy Experimental Farm,</i>
<i>Boyce</i> |
| Executive Mansion Capitol Square,
<i>Richmond</i> | Mary Washington House,
<i>Fredericksburg</i> | Stratford Hall,
<i>Stratford</i> |
| Fincastle Presbyterian Church,
<i>Fincastle</i> | Mary Washington Monument,
<i>Fredericksburg</i> | Sweet Briar College,
<i>Amherst</i> |
| Grace Arents Garden,
<i>Richmond</i> | Maymont,
<i>Richmond</i> | University of Virginia,
<i>Charlottesville</i> |
| Green Spring Gardens,
<i>Alexandria</i> | Monticello,
<i>Charlottesville</i> | Washington and Lee University,
<i>Lexington</i> |
| Gunston Hall,
<i>Mason Neck*</i> | Montpelier,
<i>Montpelier Station</i> | Wilton,
<i>Richmond</i> |
| Historic Henry County Courthouse,
<i>Martinsville</i> | Moses Myers House,
<i>Norfolk</i> | Woodlawn,
<i>Alexandria*</i> |
| | Mount Vernon,
<i>Mount Vernon</i> | Woodrow Wilson Presidential Library,
<i>Staunton</i> |
| | | Yardley House,
<i>Jamestown*</i> |

* No Longer Under Contract



Historic Garden Week

Historic Garden Week ranks as one of the most popular events in the commonwealth, attracting approximately 26,000 visitors from across the country and abroad. Voted the #6 Best Flower Festival in the country in USA Today's Readers' Choice Award in March, this Virginia tradition surpassed the Philadelphia Flower Show and the National Cherry Blossom Festival. Our most impressive national exposure this spring was web-based: HGTVGardens.com, DIY Network and the Travel Channel. Facebook page "likes" doubled in the last year; our top post reached more than 8,000 people.

Founding GCV members might not have anticipated how this venerable event would evolve. Gardening gloves and clippers replaced the white gloves of yesteryear as members scoured personal gardens (and those of generous neighbors) cutting for over 2,300 world-class floral arrangements created especially for Historic Garden Week 2016. In April, we tweeted about featured properties. Three tours actively promoted bicycling. Historic Garden Week continues to change and grow.

Income from this annual fundraiser has grown 40% in the last five years. Net revenue for 2016 exceeded last year by approximately 5%. Tour proceeds fund the restoration and preservation of Virginia's historic public gardens and landscapes, research fellowship programs and a five-year GCV 2020 Centennial project with Virginia State Parks.



Opposite page: 1. Fort Monroe. 2. Boot Camp, held at the Bolling-Haxall House so we could accommodate the 94 participants, was a big success. 3. Historic Garden Week Chairman Meg Clement (Three Chopt) and Richmond Tour Co-Chairman Catherine Whitham (Three Chopt). Meg traveled across the state in support of Garden Week. 4. Beth Coleman, (Blue Ridge), arranging on tour day in Lexington. 5. Felicia Feaster, editor-in-chief of HGTVGardens.com, visited numerous tours. Pictured with Tricia Garner (Rappahannock Valley) and Nick Cadwallender in the Cadwallenders' garden in Fredericksburg. 6. Three consecutive HGW Chairs Sandy Geiger, Julie Stone and Nina Watkins on tour from the Gloucester Garden Club. 7. Plein air artists in featured gardens are often part of the touring experience.

Horticulture

The Garden Club of Virginia's Horticulture Committee stimulates interest in horticulture by educating our members through workshops, horticulture exhibits at the Annual and Board of Governors meetings, articles in the Journal and GCV website, and Horticulture Field Day.

Horticulture Workshop



Our Joint Horticulture and Conservation Workshop, “Edible Landscaping for Wildlife and Humans,” was held at Lewis Ginter Botanical Garden. The Grow Company Principle and Founder Cabell Cox spoke about “Working With Nature, Not Against It” and Tanya Cobb, writer, teacher and professional environmental mediator talked about “Reclaiming Our Food: How Edible Gardens are Catalysts for Change.” The event, attended by nearly 100 GCV members, concluded with the viewing of the documentary “A Life: The Story of Lady Bird Johnson.”

Workshop Committee: Jane Edwards (Norfolk), Mary Anne Gibbons (Fauquier and Loudoun), Donna Clausen (Hunting Creek), Tuckie Westfall (Alexandria), Beth De Bergh (Warren County), Meg French (Virginia Beach) and Laura Anne Brooks (Middle Peninsula)
Right: Cabell Cox, The Grow Company

Two Annual Exhibits

The horticulture exhibit at the Board of Governors Meeting in Martinsville was a display of succulents in recycled containers, which were “recycled” as centerpieces for the meeting. The Annual Meeting exhibit in Alexandria was groupings of three colonial herbs in complementary containers. In addition, there was an optional garden project—growing “colonial era” plants outdoors by seed in the winter under a bell jar or plastic milk jug.



James River Garden Club's exhibit at the Annual Meeting in Martinsville

Horticulture Field Day

Horticulture Field Day 2016 met in Blacksburg and featured Virginia Tech's Hahn Horticulture Garden. Interesting and engaging speakers included Robert Saunders of Saunders Brothers, who focused on boxwood blight and the proper care of boxwood; a tour of Elissa Steeves' magical garden; a visit to Stadium Woods, an 11-acre stand of rare, urban old-growth forest and more. A diverse group of vendors specializing in many aspects of horticulture topped the event.



Horticulture Awards of Merit

Established in 1960 for individual members of the Garden Club of Virginia who achieve significant accomplishments in horticulture, both personally and in their communities. Eight members were honored at the Annual Meeting in Alexandria.

2016 Recipients:

Nancy Dickerson,
The Princess Anne Garden Club

Tamara Gibson,
The Spotswood Garden Club

Janet Hickman,
Hillside Garden Club

Missy Janes, *Fauquier and Loudoun Garden Club*

Helen Junkin,
The Princess Anne Garden Club

Linda Patton, *The Elizabeth River Garden Club*

Ann Reamy, *The Rappahannock Valley Garden Club*

Casey Rice,
Harborfront Garden Club

Flower Shows

In addition to helping clubs host the three Garden Club of Virginia flower shows, this year the Flower Shows Committee created flower show guidelines that could both streamline the duties of host clubs and significantly cut costs. We hope the work done this year will pave the way to a new, more future-oriented model of our beloved shows.

Inter Club Award

The GCV Annabel Josephs Inter Club Artistic Award is a perpetual trophy given annually to a member club for excellence in flower arranging at GCV flower shows. It is awarded to the club accumulating the most points in the artistic Inter Club Class yearly. This year's award went to the Hunting Creek Garden Club, finishing the year with a Quad Blue at the Daffodil Show.



GCV Flower Shows Chairman Lea Shuba (Hunting Creek) presenting the Annabel Josephs Award to Kim Davis and Gugi Hooff (Hunting Creek)

Flower Arranging School

Flower Arranging School is a much anticipated event open to all GCV members. It provides demonstrations of unique and familiar flower arranging techniques. Just completing her stint as the head White House arranger, Laura Dowling treated us to an insider's look at her time there, as well as a sampling of her trademark modern French arranging.



Rose Show

Gabriella Garden Club hosted a romantic 77th Rose Show, featuring traditional arrangements saluting the poetic rose. Mill Mountain won the Quad Blue with an Italian Renaissance design interpreting Shakespeare; Janie Vaughan (Hillside) won for best individual and most creative interpretation of Omar Khayyam's poetry and Karen Wachtmeister (Warrenton) won the Hundley trophy for the GCV Member Sweepstakes.



1.

1: Class 40 A Blue Ribbon Quad winning arrangement created by Mill Mountain Garden Club **2:** Class 44 Blue Ribbon and Best in show Artistic Arrangement winner Janie Vaughan (Hillside) **3:** Floribunda, One Bloom per Stem 'Easy Does It' exhibited by Karen Wachtmeister (Warrenton) **4:** Rose Show Co-Chairman Margaret Scott, Club President Betty Leggett (both Gabriella), GCV Rose Chairman Sherry Leffel (Spotswood) and Rose Show Judges Chairman Rebecca Atkinson (Gabriella)



2.



3.



4.

Daffodil Show

The Huntington Garden Club hosted the second largest daffodil show in the country, featuring masses of the spring beauty. Inter Club classes showcased the Chesapeake Bay, the Quad Blue going to Hunting Creek's arrangement spotlighting NASA's space program. Ceci Brown (Gloucester) won the Elizabeth Clopton Brown Member Sweepstakes Trophy, presented to the GCV member with the most blue ribbons.



1: Hunting Creek's Quad Blue Parallel Arrangement

2: Best Collection of Six, Ceci Brown (Gloucester)

3: Emily Barbee (Gloucester) Blue Ribbon Mille Fleur

4: Best in Show "Jamore" Kate and Mitch Carney



Lily Show



Lions, tigers and bears were the stars at the 74th GCV Lily Show, hosted by Fauquier and Loudoun Garden Club. The innovative arrangements interpreted "The Wizard of Oz," with the Quad Blue Inter Club award going to the Lynchburg Garden Club and the individual prize to Caroline Parrish (Warrenton). The new Helen Turner Murphy Award for the Best Inter Club Test Collection was won – appropriately – by the Garden Club of the Northern Neck, Helen's club.



The Helen Turner Murphy Award is presented to the Blue Ribbon winner of the Lily Inter Club Collection

Annual and Board of Governors Meetings



The 2016 Garden Club of Virginia Annual Meeting



The Garden Club of Alexandria hosted the 2016 GCV Annual Meeting at the Hilton in Old Town Alexandria, co-chaired by Jennifer Kelley and Catherine Bolton.



GCV President Jeanette Cadwallender (center), President Sue Rosser and Nancy Moore, (Martinsville) co-chairman of the 96th meeting of the GCV Board of Governors in October 2015 at the New College Institute.

Garden Club of Virginia Travel



In late February 2016, GCV members and friends travelled for a two-week journey to tour gardens of Northern India. The itinerary included many landmarks important to the Mughal period of history throughout Rajasthan and, of course, the Taj Mahal, Sha Jahan's monument to his wife, Mumtaz. A highlight was walking through the President's Garden in Delhi; open for only a few weeks each year, this garden showcases the role water plays in Mughal garden design and was perfectly planted with an abundance of roses, bulbs and dahlias. The capable tour guides made sure all arrangements for comfort were considered. The camaraderie enjoyed by the group is a good omen for future trips with GCV.



Honor Roll of Donors

July 1, 2015 – June 30, 2016

The Garden Club of Virginia is honored to acknowledge the generosity of our members and friends.

* **Perennials** – Three or More Years of Annual Fund Giving

Regency Terrace \$10,000 and above

Bartlett Tree Experts
 Hilldrup Moving & Storage
 Prime Media Productions
 The Robert & Bessie Carter Foundation
 Mr. and Mrs. Charles G. McDaniel*

Alpine Garden \$5,000-9,999

Bank of the James
 Fraîche
 Oakwood Foundation*
 Mrs. William G. Pannill

President's Parterre \$1,000-4,999

Acclaimed Events American National Bank Bank of Lancaster Banke of Clarke County BNC Bank Bo Parrish, Virginia Land and Home Chancellor's Village Chesapeake Bank City of Virginia Beach CornerStone Bank R. Gaillard Owen, CFP and Davenport & Company Ed Weber Contracting Ellwood Thompson Farmers Bank First Capital Bank Fredericksburg Department of Economic Development & Tourism Gentry Locke Attorneys Holiday Inn and Suites Virginia Beach – North Beach Hurd's Inc. Elizabeth Johnson of Jim & Pat Carter Real Estate J. W. Townsend, Inc. KDW Home Lake Prince Woods Lemon Cabana	Middleburg Bank Nancy Myers Designer – Interior Innovations Nansemond Pre-Cast Concrete Co. Inc. – Hardscape Division Pearson Financial Group PNC Bank Robinson, Farmer, Cox & Associates Salon 730 Sheraton Virginia Beach Oceanfront Shore Bank Southern Landscape Group Richard J. Sterne, III DDS PC The Table at Wilton TowneBank of Richmond TowneBank of Virginia Beach TowneBank of Williamsburg Union Bank and Trust Van Yahres Tree Company Virginia Beach Homes Charlottesville Community Foundation Sue W. Massie Charitable Trust, UW, Bank of America, N.A., Trustee The David E. Post Family Foundation
---	---

President's Parterre \$1,000-4,999 *continued*

The Josiah P. Rowe III Family
Legacy Fund of The Community
Foundation*
The Hunting Creek
Garden Club*
The Rappahannock Valley
Garden Club*
Virginia Cherry*
Lee Cochran*

Marianna Fitz-Hugh*
Stephen Foster
Allen J. Krowe
Ingrid Hinckley Lindsay*
Katty Mears*
Helen Murphy*
Patricia Prentiss
Kitty Quarles
Helen Reveley

Boxwood Maze \$500-999

Berglund Automotives
BB&T Securities
Chelsea Business District
Cork and Table
Dixon, Feinour, Hubard
Feinour & Brown
Downtown Hampton
Development Partnership
Friends of Augusta Garden Club
Gardens in a Flowerpot
Guardian Security Systems, Inc.
International Paper
Jones LTC Pharmacy
Lancaster Farm Outlet
Lewis Insurance Agency
Lynchburg Gynecology
Mary Barnett's Gifts
and Decorative Accessories
Member One
Old Point National Bank
Palladium
Pettyjohn, Wood, & White, Inc.
Robert W. Baird and Co., Inc.
Sasser Construction
Select Bank
Stewart Langley Properties, LLC
Tiger Fuel
Terra Firma
TowneBank of Isle of Wight
Village Garden Center
The Rennie and Richmond
McDaniel Fund of the Community
Foundation of the Rappahanock
River Region
The Garden Club of Fairfax*
The James River Garden Club
Gail Babnew
Margaret Bemiss
Charlotte Benjamin*
Sally Guy Brown
Jeanette Cadwallender*

Paula R. Cameron*
Sara Campbell
Pam Combs
Candace Carter Crosby*
Teri Denton
Pam Edmonds
Clarkie Eppes*
Ann Gordon Evans*
Susie Feinour
Nina Fout
Melinda Byrd Frierson*
Margaret M. Gardner
Dottie Hendricksen*
Rossie Carter Hutcheson
Robyn Johnsen
Tata Kellam*
Lois M. Keller*
Bev King*
Ann Kington*
Mimi Mackall*
Catherine P. Madden*
Rennie McDaniel*
Josephine J. Miller*
Lisa and Don Morin
Nina Mustard*
Alexander Nicholson
Susan F. Robertson
Joanie Robins*
Mary Lou Seilheimer*
Dianne Nea Spence*
George C. Stuckey
Sue Thompson*
Susan Timmons
Margie Toms
Laura Valentine
Kay Van Allen
Cabell West*
Susan Wight*
Barbara Pratt Willis*
Susan Wynne*

Healing Garden \$250-499

American Frontier
Culture Museum
Bank of Southside Virginia
Blue Ridge Urology
Association
Cafe Caturra
Campbell Insurance
Crown Jewelers
Davidson, Doyle & Hilton
Davidson & Garrad, Inc.
Jason E. Dodd, Realtor
Emilios Restaurant
Frazier & Associates
Ghent Seafood
Grassroots
Jamerson-Lewis
Construction
Jamie & Saxton Moss
Kate Uncorked
Koinonia
Lang's Jewelers
Lawn Doctor
Leslie Hartig Floral Design
L.J. Kellum Construction
Moffitt Family
Moore & Giles, Inc.
Mosaic
Mosquito Squad
The New Leaf
Pink Palm
Presbyterian Cemetery
of City of Lynchburg
Savor the Olive
Serendip
Shoe Box
Robert N. Sorenson, DDS
Staunton Olive Oil
Swift Creek Mill Playhouse
Wall, Einhorn &
Chernitzer, P.C.
Walnut Hill Pharmacy
Wardrobe
Weichert Realtors
Wilbanks, Smith
& Thomas
The Garden Club
of Alexandria*
The Blue Ridge
Garden Club*
The Boxwood
Garden Club*
Fauquier and Loudoun
Garden Club
The Princess Anne
Garden Club*
The Tuckahoe Garden
Club of Westhampton*
The Williamsburg
Garden Club
Betsy Agelasto*
Vicky Alexander*
Anne Baldwin*
Molly Barrow
Mrs. Grace L. Battle
Jill P. Beach*
Nancy F. Bowles*
Victoria D. Brock
Nan Brody
Lissy Bryan
Missy Buckingham*
Barbara Catlett
Joanna D. Catron*
Meg Clement*
Jane Cowles*
Mrs. Roderick A.
De Arment
Eeda Dennis*
Lucy R. Ellett
Frances Ellis
Betsy Fauntleroy
Rossie Fisher
Flossie Fowlkes*
Carol S. Fox
Mary Frediani
Jean Gilpin*
Diane Ginsberg
Greta Gustavson*
Celie Harris

Mrs. James H. Herbert*
Janet Hickman*
Lynn Hooff
Walter B. Hurley, Jr.
Lyn Hutchens*
Joyce C. Jaeger*
Missy Janes
Cece Johnson*
Jean Johnson
Leila Jones*
Frances Kahn
Kay LePeter*
Debbie Lewis*
Mary Jac Meadows*
Meredith Mercer
Martha F. Moore*
Margaret Moring
Lisa Mountcastle
Susan Mullin
Jamie A. Old
Bobbi Oldham
Polly Perkins*
Helen Pinckney*
Sarah Porter
Denise Revercomb*
Tricia Russell*
Tricia Sauer*
Rodie Savage
Inge B. Sen
Lea Shuba*
Sally Simmons
Doris Smith
Kaye Smith
Lizz Stanley*
Anne Tankard*
Carey Thompson
Lelia Graham Webb
Tuckie Westfall*
Janice Whitehead*
Catherine Whitham*
Lauren Woolcott*
Betsy Worthington*
Heather Zippel

Annual Border \$100-249

The Bakehouse at Chelsea
Blue Ridge Mortgage
The Birch
Dan Vance
of Edward Jones
Davis Storage
Flippo Lumber
Construction
The Junior League
of Dallas Garden Club
Kimberly's
Norfolk Plumbing
Orapax
Otzi Tattoo Agency
Princess Anne Estates
Riverside Shore Memorial
Hospital
Smartmouth Brewery
University of Richmond
Museums

William H. Talley
& Son, Inc.
Younger Construction
The Council of
Historic Richmond
Foundation, LLC
The Ashland
Garden Club
The Charlottesville
Garden Club
The Elizabeth River

Annual Border \$100-249 *continued*

Garden Club
 Gabriella Garden Club*
 The Garden Club
 of Norfolk
 The Garden Club of the
 Northern Neck*
 The Garden Study Club*
 The Huntington
 Garden Club
 The Junior Virginia Beach
 Garden Club*
 Leesburg Garden Club
 The Lynchburg
 Garden Club
 The Virginia Beach
 Garden Club*
 Rivanna Garden Club*
 Roanoke Valley
 Garden Club*
 Cathy Adams*
 Dana Adams*
 Eleanor Adams
 Pearl R. Adamson
 Elizabeth Lamar Allen
 Sandy Aman
 Jacalyn K. Anderson
 Martha and Brady
 Anderson
 Leslie S. Ariail
 Anne Avery
 Mrs. James A. Bacon*
 Susan Bailey
 Sheila Baker*
 Dottie Ballard*
 Carol Barr
 Lamar G. Barr*
 Turner Barringer*
 Sarah Bass
 Diane Bassett*
 Sugie Battin*
 Sharon Beale
 Anne Beals*
 Nan Bennett
 Vickie and Larry
 Blanchard
 Elizabeth Boetsch
 Carolyn Bottger*
 Jane Bowden
 Matilda and John
 Bradshaw*
 Jody Branch*
 Gail Braxton*
 Betsy Bredrup
 Suzanne W. Bresee
 Cecilia Brown
 Deedy Bumgardner
 Jody Bundy*
 Terry Buntrock*
 Betsy Burnette*
 Sharon Byrd*
 Gigi Calvert*

Nancy Campbell
 Kris Carbone*
 Candy Carden*
 Elizabeth J. Carden*
 Johanna Carrington
 Sandra Carrington
 Janice Carter*
 Betsy Casteen*
 Ruth Chaney*
 Sherrie Chappell
 Chatham Garden Club
 Daphne Cheatham*
 Joyce Childress*
 Peggy Christian
 Melanie Christian*
 Catherine Claiborne
 Coates Clark*
 Mary Ann Clark
 Eva Clarke
 Kay Clary
 Kathleen Coalter
 Tanya Denckla Cobb
 Patsi Compton*
 Linda Consolvo
 Di Cook
 Kim Cory
 Rachel Cottrell
 Jane E. Covington
 Martha Craddock
 Berenice D. Craigie*
 Martha Creasy
 Ann Crenshaw*
 Lisa Cresson
 Lilliboo Cronly
 Kathy Cropp
 Anne Cross*
 Kristin B. Dabney
 Nancy Daniel*
 Betty Darden*
 Mary Hart Darden
 Penny Dart
 Mr. and Mrs.
 Randall E. Davis
 Tessa E. Davis
 Beth Robbins DeBergh*
 Katia E. DeJarnette
 Mary Denny*
 Michele DeWitt
 Jennifer Dick
 Claiborne Dickinson
 Peggy Duvall
 Jane Edwards*
 Joan Eliot
 Trina English
 Margo Eppard
 Moonie Etherington
 Susan H. Farmar
 Millie Faucett
 Jane Reed Fields

Cheryl Fockler
 Anne Foster
 Mary Nolde Foster*
 Carter Frackelton*
 Katherine M. Francis
 Rosemary Francis
 Beth Frank
 Janet Frantz
 Kay Freeman*
 Mrs. William Gardner*
 Tricia Garner*
 Roberta Garnett*
 Susan Garrett*
 Adelaide Grattan*
 Cathy Green
 Miriam Green*
 BeBe Green
 Betsy Greene*
 Julie Grover*
 Missy Gullquist*
 Perry Guy*
 Cynthia D. Hall
 Susan Chamberlin Hall
 Susan F. Hamill
 Liz Hamilton
 Catherine Harcus
 Sara Hargrove*
 Lucy Harman*
 Sally Harris*
 Ann E. Harry
 Susan C. Henderson*
 Mary Jane Hobbs
 Sarah S. Hodgkin*
 Mary Sherwood Holt
 Gugi Hooff*
 Helen Hopper
 Mac Houfek*
 Mary Howard*
 Cessie Howell
 Pamela Hudson
 Lucy Huff*
 Betsy Huffman
 Gay Huffman
 Nancy C. Inman
 Linda Isley*
 Kate S. Jacob
 Heidi F. James*
 Anne Jennings*
 Mary Ann Johnson*
 Robin Johnson*
 Carolyn Jones
 Sidney Jordan*
 Jane Kerewich*
 Mary Kincheloe
 Patricia Rodman King*
 Mary Mac Laing
 Harriet Larsen
 Meg Laughon
 Joni Lawler*

Annual Border \$100-249 *continued*

Sue Lea
 Pattye H. Leggett
 Betty H. Lesko*
 Gladys Lewis
 Ginny Lewis
 Rita Liles
 Marcia Long*
 Bebe Luck
 Mary Lunger
 Barbara B. Luton*
 Patti Lynch
 Joan N. Lyons*
 Ginni Mackenzie*
 Karla S. MacKimmie*
 Victoria MacMillan
 Tuss Macpherson
 Becca Mahon*
 Alice Martin
 Robbie Mascotte
 Madeline Mayhood
 Judy Mazzucchelli
 Kathy McCahill
 Lynn McCashin*
 Mary Leigh McDaniel*
 Mary Wynn McDaniel*
 Tricia McDaniel*
 Lynn McFadden*
 Jerry McKinney
 Sue McNeely
 Katie Michaels
 Karen Miles
 Poohdie Miller
 Camilla Moffatt
 Sharon Moody
 Joyce Moorman
 Sue Ann Morgan*
 Pam Moskal*
 Merrick Murray
 Kim Nash*
 Caroline Neal*
 Betsy Neale
 Terri Nicholaou
 Mrs. John A. Nolde, Jr.
 Suzanne Obenshain*
 Becky O'Brian
 Mercer O'Hara
 Jane O'Keefe
 Patty Olivieri*
 Kathleen O'Neal
 Mrs. William C.
 Overman, Jr.*
 Barbara Pace
 Frances Padden*
 Elizabeth Jackson
 Parrish
 Audrey Parrott*
 Sarah Belle Parrott
 Mary Parsley
 Judy Perry

Sallie Philips
 DeLane Porter*
 Monica Prahinski
 Lauren Prince*
 Nancy Purcell
 Betsy Quarles
 Ann Reed*
 Emily Reed
 Elizabeth Reynolds
 Linda D. Reynolds
 Casey Rice
 Joyce Rice*
 Jennifer Rinehart
 Susan Ripol
 Phyllis Ripper*
 Barbara Roberson
 Susan Robertson*
 Michaela Robinson*
 Virginia Rocen
 Susan Rogers
 Sue Rosser*
 Molly Rueger*
 Blair Johnson Rumney
 Meredith Rutter*
 Missy Ryan*
 Mary Kay Ryan
 Sue Ryan*
 Maureen Sallade
 Mr. and Mrs. Toy D.
 Savage III
 Dale Payne Sayers
 Jane Schaubach*
 Sallie Schmidt*
 Betty Schutte
 Ann Sears*
 Vivian Shackelford
 Betty Shaw
 Martha Sherman
 Mary Shockey
 Cynthia S. Shook*
 Elizabeth Shuey
 Anita Shull
 Jocelyn Sladen*
 Alice Smith
 Amy Smith
 Belle Smith*
 Katrina Smith
 Mimi Smith
 Missy Smith
 Lois Spencer*
 Katya Shoemaker
 Spicuzza
 Joan Sprinkle
 Cora Sue Spruill
 Oz Staley
 Hollis S. Stauber
 Laura Stevens
 Debbie Stevenson
 Julie Stone

Lynda Strickler*
 Betty Strider*
 Jane Stringer*
 Anne Stuart
 Ms. Page D. Styles*
 Gina Sullivan
 Kit Sullivan
 Nancy Sutcliffe
 Kathy Sweet
 Mrs. Norman E.
 Tadlock*
 Liz Talley
 Peggy Talman
 Patsy Thompson*
 Anne Tilney
 Louise Toms
 Lee Turlington
 Marcia B. Turner*
 Jan Tutton
 Sherry Twining
 Kay Tyler*
 Peggy W. Valentine*
 Cassie Van Derslice
 Annie Vanderwarker
 Karen Wachtmeister*
 Kitty Lee Wafle*
 Martha S. Walker
 Wendy Walker
 Willie W. Wallace
 Jessica Bemis Ward*
 Anne Warlick*
 Rachel Watson
 Jane Wells
 Peyton Wells
 Marty Whipple
 Jane White
 Sharon H. Whitt*
 Mrs. Brooke
 Coleman Wick*
 Mary Wick
 Dootsie Wilbur*
 Kate Williams*
 Kay P. Williams
 Eileen A. Wilson*
 June M. Wilson
 Lucy Wilson*
 M. Douglas
 Wise-Stuart
 Libby Wolf*
 Bobbye Raye Womack
 Mina Wood*
 Nancy Wood
 Suzi Worsham*
 Mary Denny Wray*
 Judy Craddock Wright*
 Suzanne Wright*
 Sarah Jane Wyatt
 Page Young
 Kate Zullo*

Knot Garden \$1-99

Camp Maxwelton for Boys/ Camp Lachlan for Girls	Susie Benson Durfee Betts	Cary Dabney Jackie H. D'Alton
Catharine Gilliam Burns for Middlebrook General Store	Ellen Beville Garland Bigley	Ruth and Royden Daniels Martha Davidson
Dominion Foundation	Mary T. Bivens Tommie Blackmon*	JoAnne Davis* Margaret Davis*
Five Kings, LLC	Patsy Carpenter Blackwell Jennifer Blackwood	Martha Davis* Rachel Davis
Henley F. Gabeau Living Trust	Anne Bland* Cindy Bolling	Barbara Davison Carol A. Deaton*
J.F. Brown Real Estate Services	Kae Bolling* Jane McClure Booth	Pam DeBergh* Carole Decker
Jump Mountain Vineyards	Marianne Bowles* Judy Boyd	Nancy Dempsey Nancy K. Dickerson
Katherine Lamb for Rockbridge Area Hospice	Betsy Bradford Burgess Bradshaw	Eileen Dickey Kathleen F. Dickinson
Michele Fletcher Landscape Design	Tricia Branch Catherine Brooks*	Lit Willis Dodd* Eva Donley
Mountain View Farms, Ltd.	Nancy and Peter Brooks Laura Y. Brown*	Ashli Douglas* Suzanne Duffey
Old South Antiques	Mary Louise Brown Penny Bryan	Suzanne Duffey Jaye DuPaul
The Augusta Garden Club	Martha Ware Bryan Archer C. Burke	Marty Easton* Cynthia Edgerton*
The Brunswick Garden Club	Suzie Burton Gail Camalier	Jane Eggleston Kelly H. Ellis*
The Garden Club of Danville	Janet Campbell Meg Campbell	Karen Ellsworth Judy M. Epperly*
The Franklin Garden Club	Lisa Caperton* Ann Cardwell*	Petrie Ern Donna A. Eure*
The Hampton Roads Garden Club	Betsy Sale Carey Susan Carl	Betty Evans* Betsy Feldmann
Harborfront Garden Club	Diana J. Carter Gwen Carter*	Jayne Feminella Lolli Fensterer*
Merrimac Garden Club	Kathleen M. Carter* Claire Hardin Cassada	Dee Ferguson Marty Field
The Garden Club of the Middle Peninsula*	Didi Chapin* Jane Cheadle*	Muschi Fisher Carroll Foley
The Mill Mountain Garden Club*	Robin Cherry Anne Chewning	Jinxie Forbush* Ely Foster*
The Petersburg Garden Club	Sarah Chiffrieller Michaux Tayloe Chopski*	Marion C. Foster Nan Freed
The Garden Club of Warren County	Mrs. Herbert A. Claiborne* Toni Clark	Tyra Freed* Nancy Freeman*
Winchester-Clarke Garden Club	Catherine Clextan Boo Compton	Cindy Frith Carroll Frohman
Suzanne Aiello*	Ana Conceicao Mrs. David Constine	Randy Fuller Cammie Furber
Kathy Allen*	Marsha Costen Ginny Costenbader*	Nancy Furr Pam Gale
Ann Ambrose	Barbara Cox Teckla Cox*	Elizabeth Galloway* Betty Anne Garrett
Megan L. Ames	Carolyn Creasy* Cathy Creekmore*	Lanny Gault Martha Geiger
Marsha Amory*	Betsy Cromwell* Kim Cross*	Anne T. Geyer Mary Lou Glass
Larry Anderson	Bonnie Cuddihy Linda B. Custis*	Ellen Godwin* Kay Goldberg*
Betty Angell	Virginia L. Cutchin* Cary Dabney	Missy Goode Phyllis Gootee
Kathryn Angus		
Susan Armfield*		
Anne Arnest		
Rebecca Atkinson*		
Brenda Augst		
Nancy Avery		
Cary Baber		
Betsy Bacon		
Zoe Ballenger		
Dale Banning		
Angela W. Barksdale*		
Mary Elizabeth Barnes		
Leigh Barth		
Joanne Bartlett		
Beverly E. Bates		
Isabel Bates		
Kathryn Beale		
Joanne G. Beck		

Knot Garden \$1-99 continued

Tina Graham Glenna Graves*	Fran King Kassie Kingsley	Mary Jane Naismith Kaye Nazarian
Susan A. Graves*	JoAnne H. Kinnamon*	Kathleen Nevill Tommi Nevin
Jennifer M. Griffiths Chic GronessGall*	Betty Kipps Diane Kline*	Ferrell T. Nexsen Alice Nicholas
Bettie Guthrie* Kathie Haas	Lynn Korff* Alice Koziol	Lois Nichols* Carolyn Noland
Lexie Haglund Joanna Hamnett	Louise LaBarca* Dr. Aileen Laing	Chris O'Brien* Merry Outlaw
Ann C. Hankins Elizabeth Broaddus Hardy*	Jackie Lane* Sue Lang	Susan Overton* Anne Parker
Marijane Harper Mary Lawrence Harrell*	Anne J. Lanning Cathy Moore Lee	Sandy Parks* Ann Parr*
Anne Harrison L. Harris* Lou Harris	Betty Leggett Tara Little	Ann Parr* Catharine Patton
Elizabeth Hart Katherine Harvard	Linda R. Livick Hutch Livingston	Mary Jane Peake Judith Peatross
Maureen Harvey* Dottie Hawkins*	Corinne Llewellyn* Kris Lloyd	Melinda H. Penn Pat Perkins
Carolyn Helfrich Sarah Hellewell	Jackie Locke Peg Lockwood	Cathy Philips Debby Philp
Ted and Pam Henifin Donna Herbert*	Margie Lucas Deena Lugar	Nancy Philpott* Sarah Pierson
Gerry Higgins Mary Hintermann	Linda Macdonald Boyd MacIver*	Betty Pigg Susan Pilson
Susan Hodges* Lyn Hodnett	Julie MacKinlay* Lucyle Macon*	Janie Pinney* Joan Pollard*
Mary Hoerneman Lula Hopkins	Jane Maddux Anne Madonia*	Charlotte Porterfield* Rita Potter
Nancy Earle Horgan Lynn H. Hower*	Pat Malgee Nancy Mastin	Liz Price Anita Priddy
Amy Hudgens Janet Hudgins	Mrs. John Q. A. Mattern II Judy Matthews	Pat Proctor* Gail Pruden
Bev Hudson Martha I. Hunt	Judy Mawyer Cindy May*	Pam Pruden Jane Purrington*
Susan Husak Maureen Hutchens	Charlotte McClain Deborah McDonald	Patricia M. Rabil Kim Raines
Elizabeth Hutter* Jerrie H. Hyle	Ann McMurray* Mrs. Paul R. McNeer	Ann Reamy* Elizabeth Reed
Mary Slingluff III Paula Z. Irons	Martha Medley Ardis Merritt	Margaret Richardson Mary Riley*
Kathleen Jackson Sally James	Anne Mikula Betty Miles*	Libby Robertson Suzie Rockwell*
Elizabeth Johnson* Karan M Johnson	Susan Miner Stephanie Minter	Cynthia Roscoe Jane W. Rotch*
Kelly Johnson* Mary C. Johnson*	Alana Mitchell* Gail Mitchell*	Beverly Rowland Pamela B. Rucker
Natalee D. Johnsrud Bruce Jones	Daisy Moga Forrest Moore	Natalie H. Rude* Carol K. Santaro
Ellen Jones Rita Jones	Marty Moore Amine E. Morgan	Linda G. Sargent Melissa Saunders
Ellen Joyce Margaret Joyner*	Jan Morris Jean Morris	Virginia Savage Mary Ann Schmidt
Faith Kauders* Aileen Kelly	Susan Morris* Louise Morton*	Mary Ann Schmidt Jan Schuler
Jude Kelly Ellen Kelso*	Susie Mote* Kate Muller	Sally Seward Biddie Shelor*
Ruth Keyser* Judy Kidd*	Susan Murphey Jacquelyn J. Myers	Marion Simpson Susan Sims
		Betsy Sisson*

Knot Garden \$1-99 *continued*

Dana Y. Smith	Carolyn Thacker	Mrs. Meade Welch
Gail D. Smith	Lauren Thompson	Pris Wellford
Laraine Smith	Mary Nelson Thompson*	Ann Wentworth
Lori Barker Smith	Scottie Thomson	Barbara Wheless*
Mary Meridith Smith	Nancy Tilman*	Debi Whittle*
Mary M. Abel Smith	Nella Timmons	Alice Wilkerson
Susan Weaver Smith	Susan B. Totty	Widget Williams*
Mollie S. Snead	Ellen Upton*	Melissa Williams
Sarah Forbush	Lockett Showalter	Dawn Williamson
Southworth	Van Voorhis	Susan Winn
Mary Lew Sponski	Jane C. Vaughan	Paige Wiseman
Elaine Stephenson*	Wendy C. Vaughn*	Elizabeth Witt*
Joanne Stewart	Amy Vega	Patricia J. Wohl*
Marianne Stryker	Sarah Wade*	Margaret Wood*
Joan H. Stumborg	Bernice Walker*	Kay Wray*
Judy Sullivan*	Marilyn Walker*	Linda Wynne
Meg Talley*	Lynn R. Ward*	
Deborah Tanner	Betty Byrne Ware	
Catherine Taylor	Catherine Jordan Wass	
Mary Glen Boyd Taylor*	Milly Wassum*	
Mercer Taylor	Sue Forbes Watson	
Suzanne S. Taylor	Fayette Weaver	
Cynthia Temple	Stuart W. Webster*	

* **Perennials** – Three or More Years of Annual Fund Giving

Gifts in Kind

Abbitt Realty Company	Heifety International	Precision Printing
Beverly Street Studio	Music Institute	Prime Media
Black Dog Salvage	Isle of Wight County	Productions
Breeger Media Group	Museum	Ramsey Yeatts
Colesville Nursery	Isle of Wight Tourism	Real Estate
Countryside	Kline May Realty	ReFunkIt
Garden Center	Lane and Hamner,	Ronald McDonald
Derrick Rosser, Attorney	Attorneys	House
Flippo Lumber	Lewis Ginter	Shenandoah
Construction	Botanical Gardens	Spring Water
Fort Monroe Authority	Luck Chevrolet	Virginia R. Cherry
Hanover County	Lynchburg	Jane Cowles
Historical Society	Wholesale Florist	Fitz Gary
Hanover Tavern	Marshall Stone	Joan Menard, Artist
Foundation	MD – Farm Market	Jeff Nauchik
Hilldrup Moving	and Garden Center	Sallie W. Philips
and Storage	Mill Race Commons	Barry Wolfe
	North	
	Jay Paul	

The GCV Development Committee sincerely thanks Year in Review contributors: Jeanette Cadwallender, Beth DeBergh, Karen Ellsworth, Mary Ann Johnson, Kathy Knollmann, Katherine Knopf, Lynn McCashin, Quan McGough, Nina Mustard, Kim Nash, Lea Shuba, Tuckie Westfall, Will Reiley and Betsy Worthington.

Design: Dale Edmondson, Edmondson Art Direction; Editor: Ann Heller; Photography: Esther Carpi, Sandy Geiger, Ben Greenberg; Printing: Alan Smith, Professional Printing, Chesapeake, Virginia.

*The Garden Club of Virginia is a 501c3 tax-exempt organization.
All photos are property of the GCV unless otherwise credited.*

GCV Staff

Lynn McCashin <i>Executive Director</i>
Karen Ellsworth <i>Director of Historic Garden Week & Editor of the Guidebook</i>
Lexie Haglund <i>Director of Development</i>
Ann Heller <i>Communications Coordinator</i>
Tori Brock <i>Historic Garden Week Marketing Coordinator</i>
Kathy Knollmann <i>Bookkeeper</i>
Quan McGough <i>Office and Event Coordinator</i>
Lee Mondesir <i>KVH House Manager</i>



2015-16 GCV Board of Directors

President

Jeanette Cadwallender
*The Rappahannock Valley
Garden Club*

First Vice President

Nina Mustard
The Williamsburg Garden Club

Second Vice President

Anne Geddy Cross
The Ashland Garden Club

Treasurer

Betsy Worthington
The Lynchburg Garden Club

Recording Secretary

Denise Revercomb
Roanoke Valley Garden Club

Corresponding Secretary

Linda Consolvo
The Nansemond River Garden Club

Director at Large, District 1

Susan Robertson
The James River Garden Club

Director at Large, District 2

Emily Reed
The Augusta Garden Club

Director at Large, District 3

Tricia McDaniel
*The Rappahannock Valley
Garden Club*

Director at Large, District 4

Mary Jac Meadows
Chatham Garden Club

Director at Large, District 5

Kate Williams
Leesburg Garden Club

Director at Large, District 6

Pam Combs
The Garden Club of Norfolk

Parliamentarian

Missy Buckingham
The Boxwood Garden Club

Conservation and Beautification

Tuckie Westfall
The Garden Club of Alexandria

Finance

Betsy Worthington
The Lynchburg Garden Club

Development

Jean Gilpin
Winchester-Clarke Garden Club

Flower Shows

Lea Shuba
The Hunting Creek Garden Club

Historic Garden Week

Meg Clement
Three Chopt Garden Club

Horticulture

Beth DeBergh
*The Garden Club
of Warren County*

Restoration

Kim Nash
The Warrenton Garden Club